



opus  
automazione

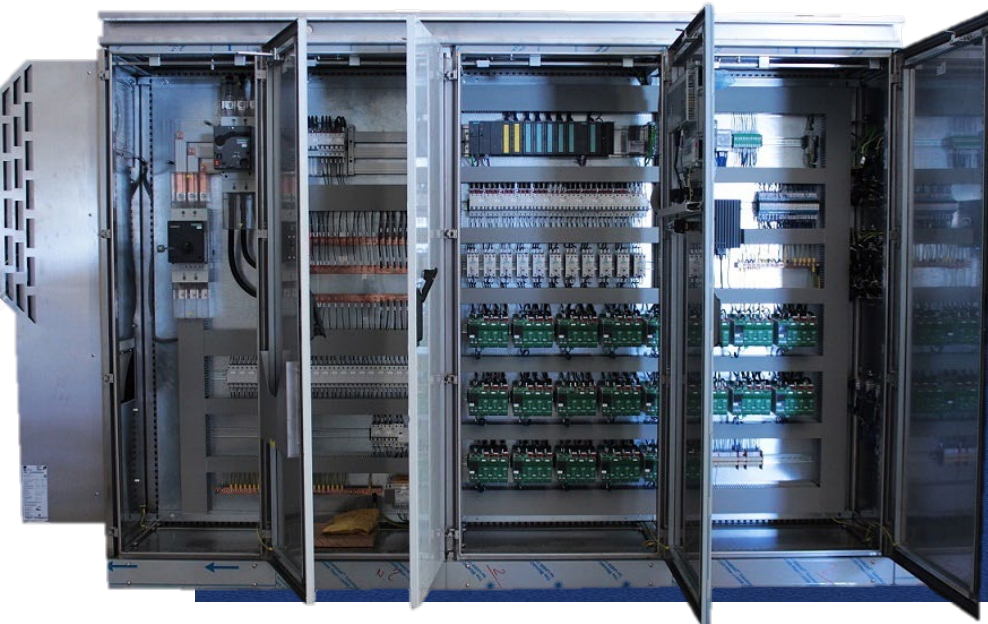
TOGETHER  
WE BUILD  
THE FUTURE

# Industrial Automation

**opus automazione** provides an integrated service for industrial and process automation

From electrical and instrumentation design, to software drafting and prototyping, to testing and commissioning of supervisory and control systems.

Our multi-sectoral experience and acquired know-how allow us to work in all industrial fields, always exploiting innovative, new or upgraded solutions on existing systems.



Oil&Gas  
Automotive  
Refineries  
Chemical Industry  
Incineration  
Cogeneration  
Purification  
Steel Industry  
Metal processing  
Food Industry  
Rubber Industry

## ● KNOW-HOW

- Embedded and Real Time Systems (ex. Labview, Linux)
- PLC (ex. Siemens, Schneider Electric, Omron, GE, Panasonic)
- DCS (es. Honeywell, PCS Siemens)
- Supervisory systems/ HMI (ex. WinCC, Intouch, Cimplicity, Movicon)



## ● SERVICES

- HW, electrical, instrumentation and mechanical design for process control or test systems.
- Software design on various platforms (PLC, .net, Labview, WEB applications)

## ● INDUSTRY EXPERTISE

- Automotive industry
- Steel industry
- Brick production
- Oil & gas
- Mining industry
- Fossil and renewable energy (distribution)
- Waste treatment, sludge, water

## ● PRODUCTS

- Automation Control Panels
- HMI software InView proprietary for customised solutions
- InnTegra proprietary software for remote control and diagnostics, links to management systems for Industry 4.0







# Testing

Test benches for Industry and Defence –  
Integration

Our activities include both the production of new test benches and the modernisation and renovation of existing systems.

**opus** takes on the role of system integrator: every solution is developed according to the client's specifications, analysing and researching the technological solutions most suitable for all requirements..

- ✓ Integration
- ✓ Validation
- ✓ Simulation
- ✓ Testing and Measurement
- ✓ Data acquisition systems

# Test systems



**BURST TEST BENCHES:** produced for tests on hydraulic components (flexible or rigid tubing, connectors, quick couplings, valves, etc.). The tests are carried out according to current regulations, including: SAEJ343 - DIN20024 - ISO7241/2 - ISO1402.



**ENDURANCE TEST BENCHES:** these are built for the testing of the lifetime of mechanical and/or hydraulic components. The benches are designed to take account of the final operating environment under test, with the aim of simulating as faithfully as possible the real operating conditions.



**SEAL TEST BENCHES:** built for the testing of objects containing liquids subject to pressure (valves, chisels, ...) to identify potential leakages.



**INTEGRATED SYSTEMS:** These are based upon test equipment that, simulating various sub-assemblies of the component under test, allows rapid integration of hardware and software systems. The architecture of the system of the acquisition and control can be developed with Real Time operating systems (LabView RT, RTX, etc.) or with standard systems (Windows).



**CHARACTERISATION TEST BENCHES:** These verify the response of the component under test to the design parameters of operation in various working conditions. The system simulates all operating conditions.



**VOLUME TEST BENCHES:** These serve to evaluate the expansion in volume of the item to be tested, under applied static pressure.



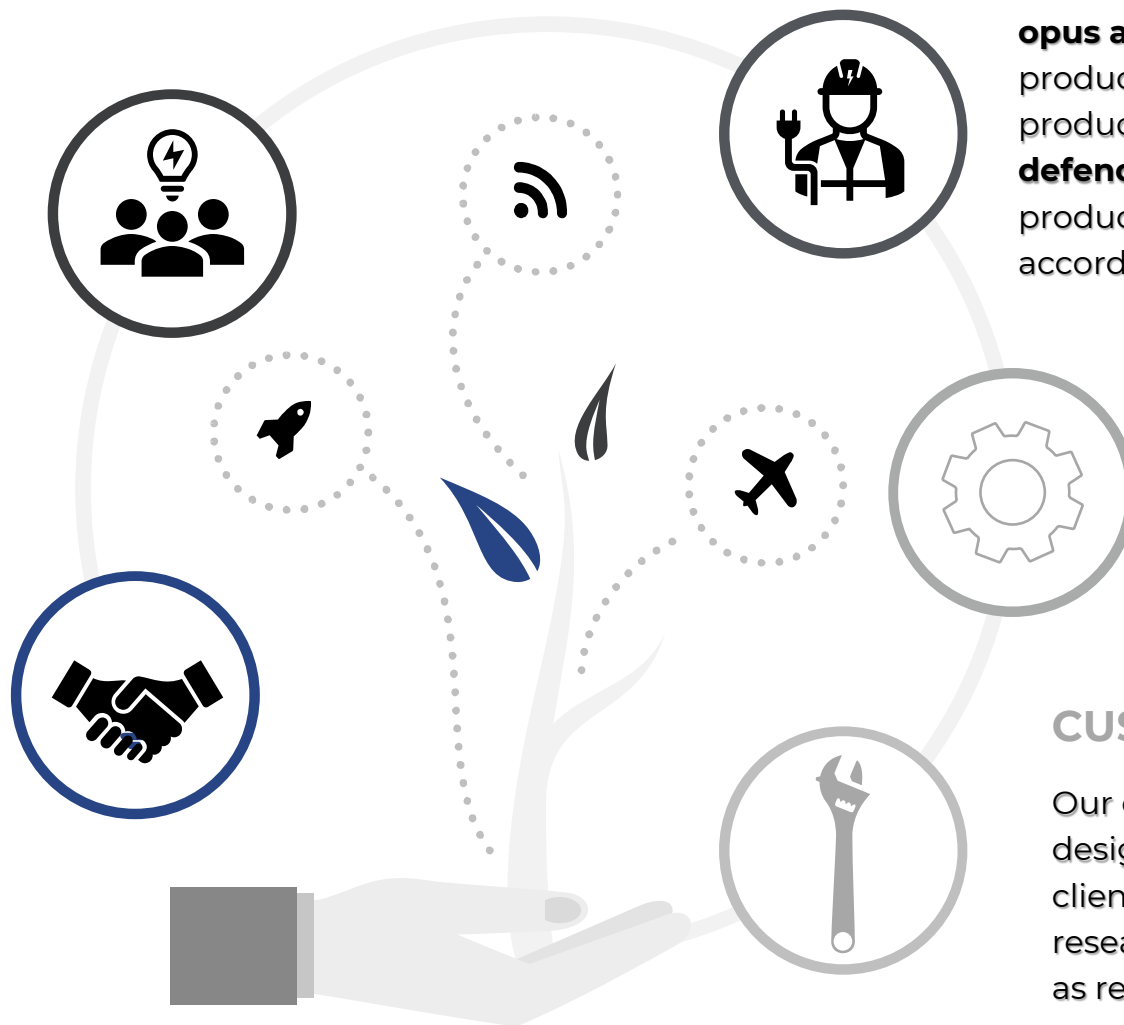
# Back ground

## EXPERIENCE

With years of experience, **opus automazione** integrates commercial products with highly bespoke products, in accordance with military and industrial standards.

## ASSISTANCE

We offer a full service of assistance and repair on-site.



## SERVICES

**opus automazione** supplies analysis, design, production and final on-site testing of finished products (prototypes or series) for the sectors of **defence, automotive, aviation and Oil&Gas**. We produce standard or personalised applications, according to clients' specifications.

## CUSTOMISATION

Our company acts as system integrator and so designs every application on the basis of the clients' specifications, analysing and researching the best technological solutions as required.